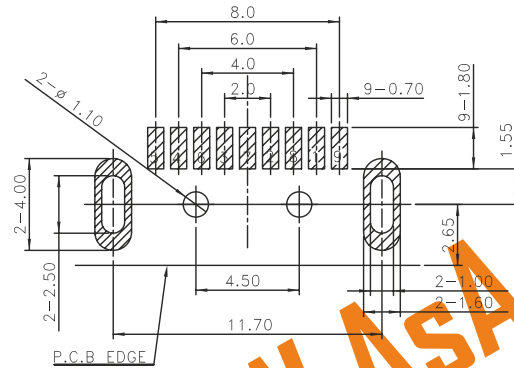
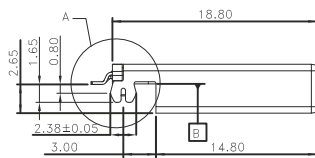
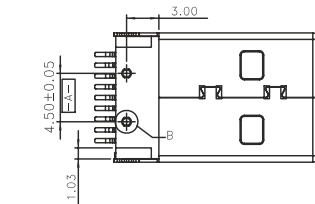
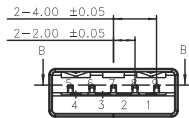


DETAIL A



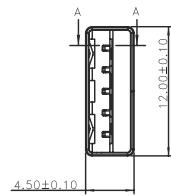
PCB LAYOUT - COMPONENT VIEW

TECHNICAL CHARACTERISTICS

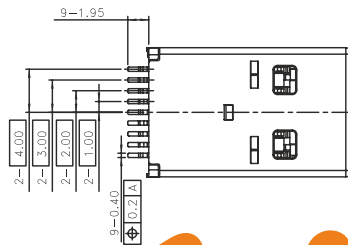
MATERIAL  
 INSULATOR: LCP  
 FLAMMABILITY RATING: UL94-V0  
 COLOR: BLUE  
 CONTACT MATERIAL: PHOSPHORE BRONZE  
 CONTACT TYPE: STAMPED  
 CONTACT PLATING: UNDERPLATE 1.27 to 2.54 μm Ni  
 CONTACT AREA 0.76 μm Gold  
 SOLDER TAIL AREA 2.54 to 5.08 μm Matt Tin  
 SHIELDING: STEEL BRIGHT TIN PLATED  
 QUALITY CLASS: 5000 MATING CYCLES

ENVIRONMENTAL  
 OPERATING TEMPERATURE: -20°C up to +85°C  
 COMPLIANCE: LEAD FREE & RoHS

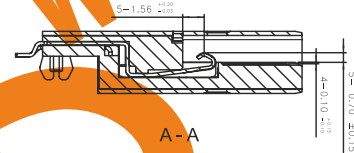
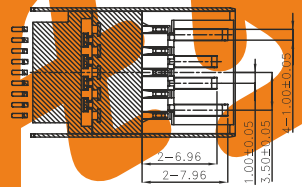
ELECTRICAL  
 CURRENT RATING:  
 - PIN 1 & PIN 4 (Vbus & corresponding ground PIN) 1.8A MAX  
 - OTHER PINS 0.25 A MAX  
 WORKING VOLTAGE: 30 VAC  
 DIELECTRIC WITHSTANDING VOLTAGE: 100 VAC/MIN  
 INSULATION RESISTANCE: > 100 MΩ  
 CONTACT RESISTANCE:  
 - PIN 1 & PIN 4: 30mΩ MAX  
 - OTHER PINS: 50mΩ MAX



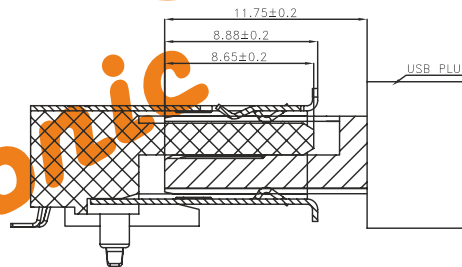
DETAIL B



B - B



A - A



AsA Electronic Co.

Tel : (+98) 21 66 73 56 82 Mob : (+98) 912 03 161 02

\* NOTE: THE RECOMMENDED PCB LAYOUT IS FOR AN OPTIMIZED RETENTION FORCE OF CONNECTOR ON PCB BUT IT IMPLIES INSERTION FORCE THAT A LOT OF PICK AND PLACE MACHINES ARE NOT ABLE TO HANDLE. THEREFORE IT MIGHT BE NECESSARY TO DRILL BIGGER HOLES FOR THE CLIPS. PLEASE CHECK THIS CAREFULLY.

RoHS Compliant

PROJECTION:	GENERAL TOLERANCE	DESCRIPTION: WR COM - USB 3.0 SMT PLUG WITH CLIP TYPE A	SIZE <b>A4</b>
	.X = $\pm$ 0.2		
APPROVAL: NPr	.XX = $\pm$ 0.15		
UNIT: MM	SCALE:		
CHECK	SHEET		
H.L	DRAW: AS		